

# SCOPE

## LED Track Light Series

The SCOPE is a series of premium LED track mounted spotlights designed to be an interior feature as much as a high-performance luminaire. Featuring a cylindrical design with a bendable arm, the Scope offers an even higher degree of flexibility for it can easily be tilted towards any desired direction. Ideal for clean and minimalist interiors that emphasizes a luminaire's form as much as its function.



### Electrical Specifications

Power Consumption	25 Watts
Input Voltage Range	220VAC - 240VAC
Driver/Power Supply	Integrated
Dimming	No

### Optical Specifications

Luminous Output	1788lm / 1918lm / 2048lm
Colour Temperature	3000K / 4000K / 5000K
CRI	90 Ra
Beam Angle	25°-60° (Adjustable)
Light Source	COB LED

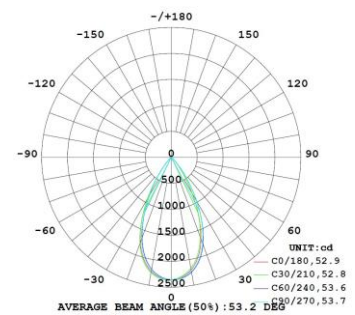
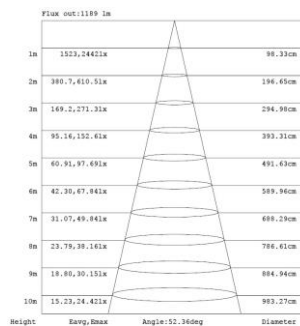
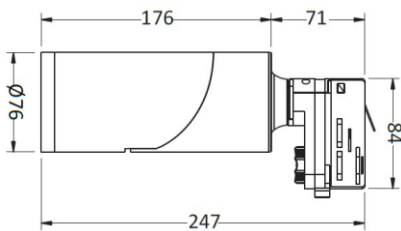
### Physical Specifications

Product Dimensions	D76 x H176
Surface Finish	White / Black
Optics Material	Reflector
IP Rating	IP20
Base Type	Track Mount
Track Adapters (For Track Base)	4 Wire Adapter

### Operating Specifications:

Ambient Temperature	-20°C ~ +45°C
Product Lifespan	30,000 Hours
Warranty	3 Years

### Dimensions & Photometry Diagram



### Order Information

Name	- Watt	Dimming	- CCT	Angle	- Size	Finish	Circuit
<input type="checkbox"/> SCOPE	<input type="checkbox"/> 25	<input type="checkbox"/> ND (Non Dim)	<input type="checkbox"/> 30K <input type="checkbox"/> 40K <input type="checkbox"/> 50K	<input type="checkbox"/> 25-60D	<input type="checkbox"/> R76	<input type="checkbox"/> W (White) <input type="checkbox"/> BK (Black)	<input type="checkbox"/> 3C (4-Wire)

Sample Code: SCOPE-25ND-30K2560D-R76BK3C

Order Code:

### PROJECT

Name:  
Reference:  
Quantity:

Notes: